



**Partnership and Marine Management**  
*Cathal O'Mahony*





Our Vision:

*“Unlocking the potential of our marine and energy resources through the power of innovation”*



Roinn Cumarsáide, Fuinnimh agus Acmhainní Nádúrtha  
Department of Communications, Energy and Natural Resources



HEA | HIGHER EDUCATION AUTHORITY  
AN tÚDARÁS um ARD-OIDEACHAS



European  
Commission

Horizon 2020  
European Union funding  
for Research & Innovation

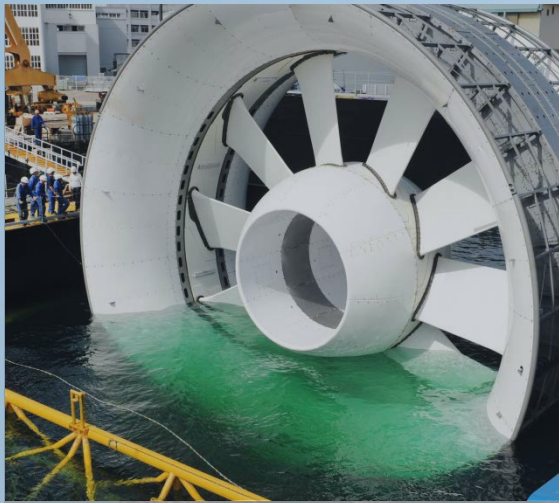


# BEAUFORT BUILDING



## Facilities Include:

- **MaREI Headquarters:** Comprising approx. 80 researchers and central MaREI operations.
- **LIR - National Ocean Test Facility:** 2,600m<sup>2</sup> tank hall which houses four test tanks, dedicated workshops and a range of electrical test infrastructure.



### MRE DEVICES

- Device Design & Testing
- Array Optimisation



### ENERGY CONVERSION/STORAGE

- Power Take-off/Control
- Smart Energy Management



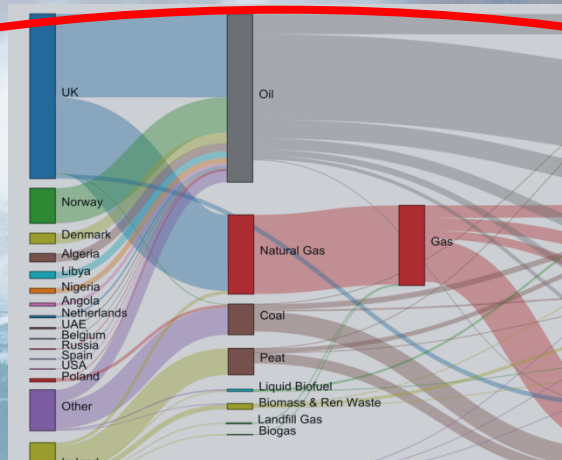
### MATERIALS/STRUCTURAL TESTING

- Composite Material Design
- Structural Testing/Analysis



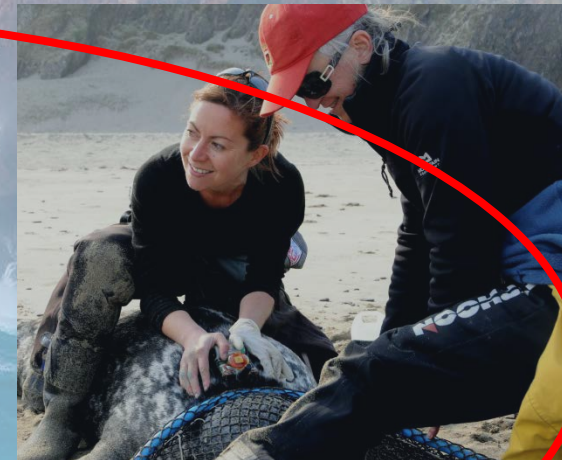
### PLANNING/OPERATIONS

- Remote Sensing/Robotics
- Decision Support
- Maritime Spatial Planning



### GOVERNANCE, POLICY & MODELLING

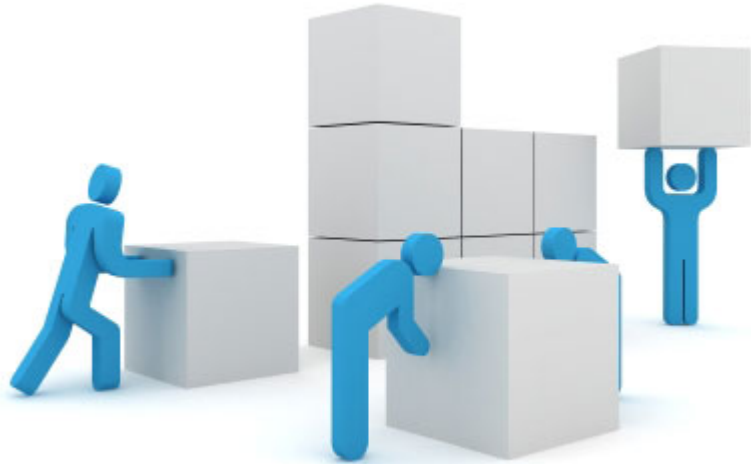
- Energy Systems Modelling
- Climate Sciences
- Policy/Legal Analysis



### MARINE ECOLOGY & MONITORING

- Visual/Acoustic Monitoring
- Biotelemetry
- EIA/SEA

*Priority 4: Create a Socially Inclusive and Sustainable Model of Regional Development*



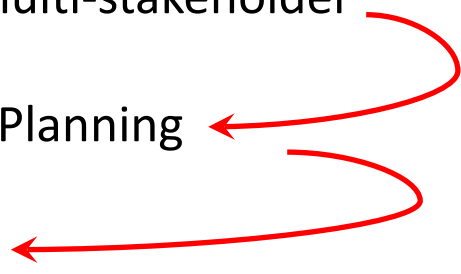
Engagement – societal and multi-stakeholder

Integrated and Participatory Planning

Co-management / Co-design

Capacity Building

Information Services



TOURISM



ENVIRONMENT



HERITAGE



AQUACULTURE



ENERGY

## ENGAGEMENT – SOME EXAMPLES

### Marine Litter

- Citizen focused
- Multiple forms of engagement
- Science Communication
- Public Awareness



### Climate Change

- International framework
- Local focus
- Range of stakeholders
- Knowledge Exchange



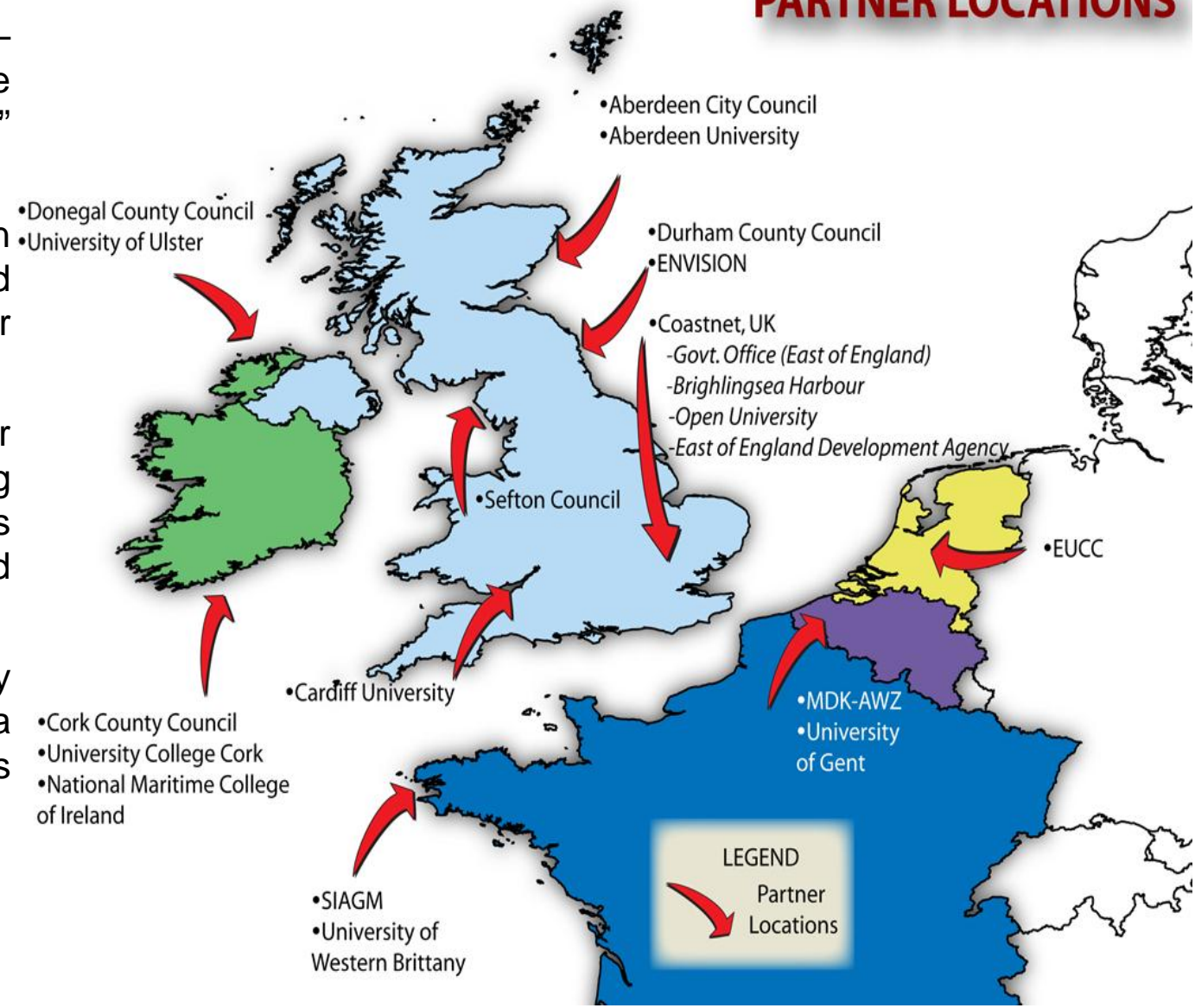
### Ecosystem Based Management

- Multi sector
- Industry and Research
- Multi-jurisdiction
- Regional – Celtic Seas



### INTEGRATED AND PARTICIPATORY PLANNING – EXAMPLE

- Cooperated with Cork County Council since mid-1990s – establishment of Expert Couplet Node represented more “*working with*” Local Authority, rather than “*working for*” Local Authority.
- ECNs represent **collaborative partnerships** between members of the research/academic community and planners (in Ireland) and coastal managers (in other study sites).
- Relationship in the guise of ECN formalised under COREPOINT project – CMRC partnered the Planning Policy Unit of Cork County Council (partnership was expanded to include National Maritime College of Ireland under IMCORE).
- Research is tailored to the needs of local authority partners – extends to training, capacity building, data collection and analysis – using robust science to address contemporary planning and management issues.



# INTEGRATED AND PARTICIPATORY PLANNING – EXAMPLE

- Supported training events involving local stakeholders.
- Produced documents on Recreational Capacity and Brownfield Site Evolution.
- Established and facilitated the Cork Harbour Forum (multi-stakeholder group) and a strategic advisory group comprising organisations with statutory and regulatory remits.
- Organised series of workshops to identify issues and solutions – issues.
- Produced Integrated Management Strategy document for Cork Harbour **(Note: Strategy is voluntary).**

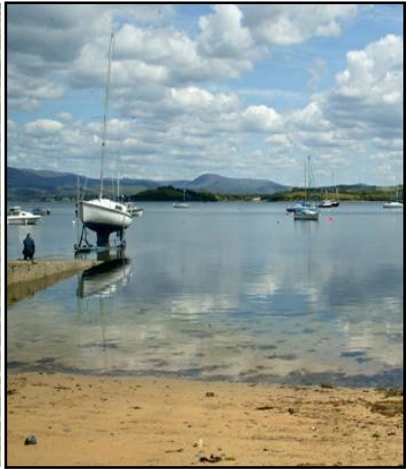
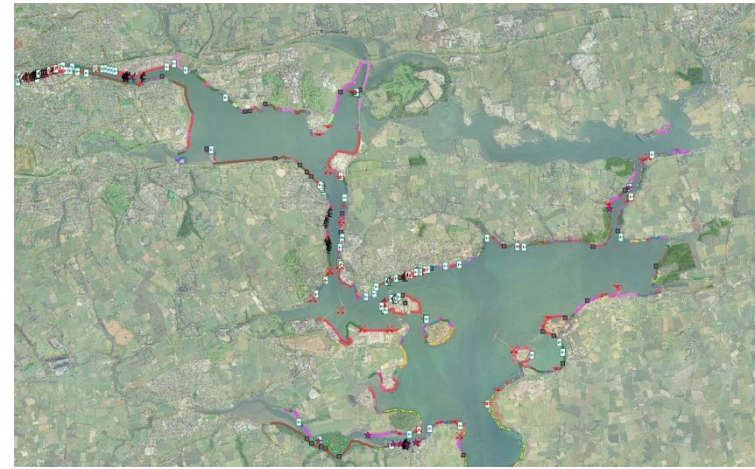
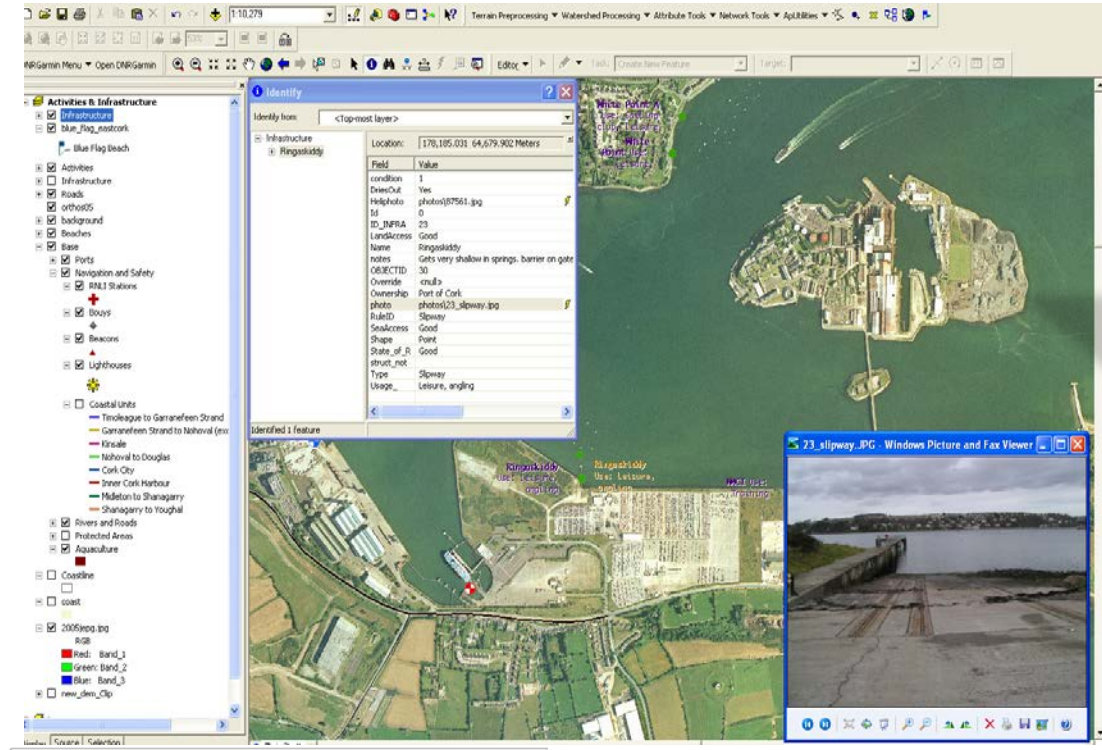


**Assessment of Coastal Recreational Activity and Capacity for Increased Boating in Cork Harbour.**  
Kathrin Kopke, Cathal O'Mahony, Valerie Cummins & Jeremy Gault  
Coastal and Marine Resources Centre, ERI, University College Cork





# INFORMATION SERVICES – EXAMPLE



## CLOSING COMMENTS

- Partnership works – INTERREG provides an excellent vehicle for delivering successful collaboration.
- Keen to build on previous experience in topics such as planning, tourism, heritage...and other areas that can contribute to supporting our Atlantic communities.
- Interested in training and capacity building opportunities, particularly as local government may have a greater role in coastal and marine planning.
- Wild Atlantic Way provides opportunity to develop projects relevant to Priority 4.
- Welcome the opportunity to discuss more ideas!!!



# Thank You

**Cathal O'Mahony,  
EU Grant Co-ordinator,  
MaREI – Marine Renewable Energy  
Ireland,  
Beaufort Building,  
Environmental Research Institute,  
University College Cork,  
Haulbowline Road,  
Ringaskiddy, Co. Cork,  
Ireland.**

**Tel: +353 21 4864332**

**Fax: +353 21 4703132**

**e-mail: [c.omahony@ucc.ie](mailto:c.omahony@ucc.ie)**

**Website: <http://marei.ie/>**